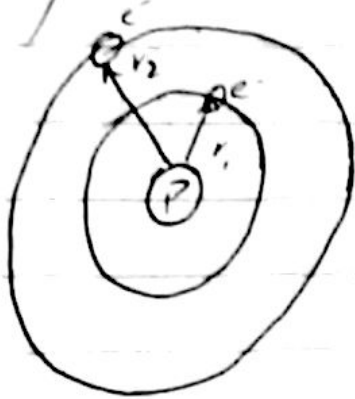


(Lecture)  
2

## Atomic Structures

∴ force upon electrons in atoms is  $F = -\frac{Ke^2}{r_1^2}$

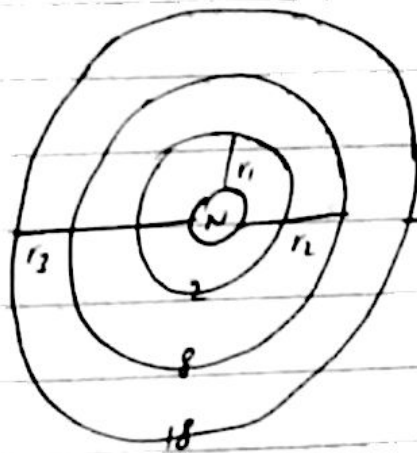


Charge on Electron =  $-1.6 \times 10^{-19} \text{ C}$   
" on proton =  $+1.6 \times 10^{-19} \text{ C}$

Binding force =  $F = \frac{K(-e)(e)}{r_1^2}$

→ Outer Shell -

$$F = -\frac{Ke^2}{r_1^2}$$



Outermost Shell  
Valence Shell  
(Valencies)

→ Electronic Configuration Rule -

$$2n^2 \quad (2n^2) \quad \therefore n = \text{Principle Quantum Number}$$